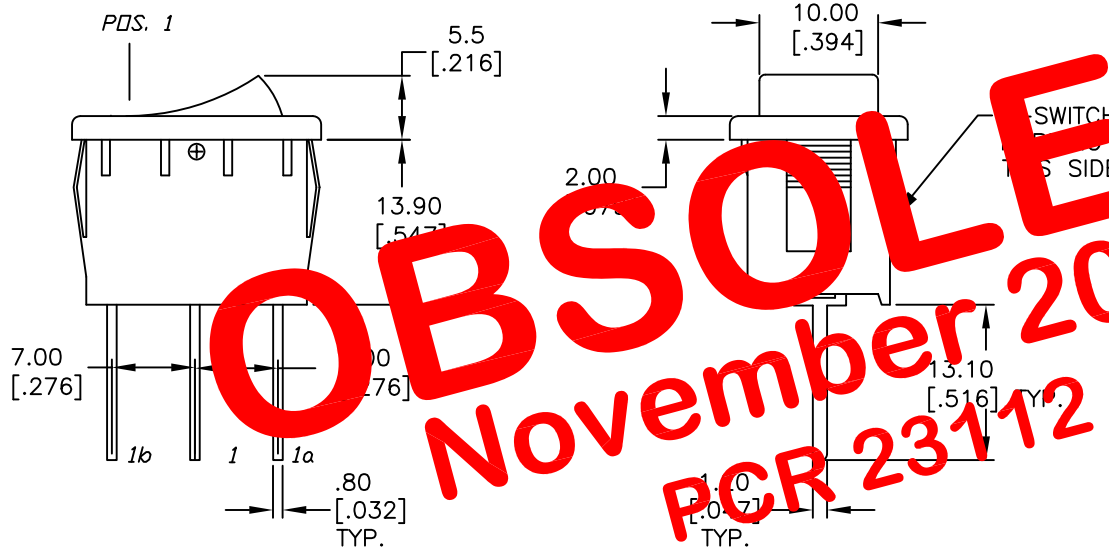
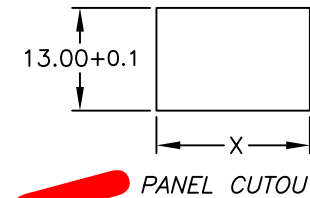
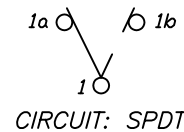


PANEL THICKNESS		X
0.75-1.25	[.030-.049]	19.2 [.756]
1.25-2.0	[.049-.079]	19.4 [.764]
2.0-3.0	[.079-.118]	19.8 [.780]

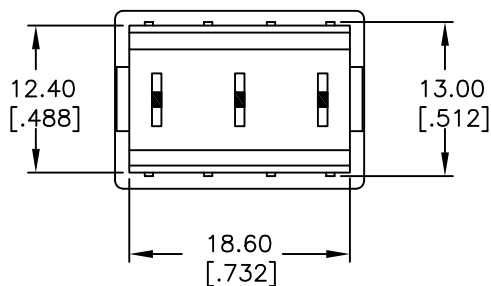


SWITCH FUNCTION		
PDS. 1	PDS. 2	PDS. 3
ON	OFF	ON
1a-1	OPEN	1-1b



NOTES:

1. ALL DIMENSIONS IN MM [INCH]
2. GENERAL TOLERANCE: X.X=±0.4
X.XX=±0.25
3. TERMINAL NUMBERS FOR REF ONLY.
4. RATING: 15A @125VAC OR
6A @250VAC
5. MECHANICAL LIFE: 15,000 cycles
6. ELECTRICAL LIFE: 10,000 cycles
7. INSULATION RESISTANCE: >1000 Mega Ω
8. CONTACT RESISTANCE: <20 Mega Ω
9. DIELECTRIC STRENGTH: >1500 V 1 minute
>3000 V between poles



E-SWITCH®

TITLE					R1966D BLK BLK HP				
SCALE	DATE	DR	DWG	REV	SCALE	DATE	DR	DWG	REV
1.5:1	10/31/02	CB	M309311	A					

A	12528	RELEASED FOR PRODUCTION	10/31/02	CJB
REV.	ECN No.	DESCRIPTION	DATE	CHKD
THE INFORMATION CONTAINED IN THIS DOCUMENT IS PROPRIETARY TO E-SWITCH AND IS NOT TO BE COPIED OR TRANSFERRED				